


SERVO DRIVE VIEW for XDA-S

SERVO DRIVE VIEW USER MANUAL
VER 1.0



<

>

1. (SVONEN Active) SERVO DRIVE VIEW
(Noise)

2. SERVO DRIVE VIEW
() . 20pin 9pin
(Noise)
(4)

1.

2.

2.1 SERVO DRIVE VIEW

3.

4.

1

1. SERVO DRIVE VIEW

1.1 SERVO DRIVE VIEW

AC SERVO DRIVE VIEW
SERVO DRIVE VIEW , PC
, , ,
가
(Download) ,

1.2 (Win 95, 98, 2000, XP)

1.2.1 CD DISK install

1. CD(DISK) CD-ROM(E:\) ()
2. SERVO DRIVE VIEW_XDA-S.exe
3. SERVO DRIVE VIEW

1.2.2 install

- 1.
2. Setup.exe
3. SERVO DRIVE VIEW

가 'C:\Program Files\LSIS\XGT SERVO VIEW' 가 ,
'XGT DRIVE VIEW' SERVO DRIVE VIEW

2.

2.1 SERVO DRIVE VIEW Window

'XGT DRIVE VIEW'

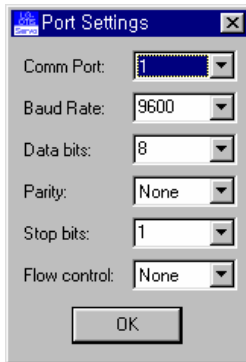
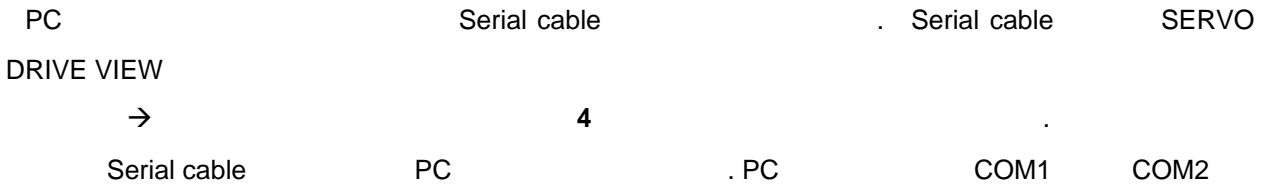
SERVO DRIVE VIEW Window 가



1. SERVO DRIVE VIEW

SERVO DRIVE VIEW

2.1.1 Serial cable



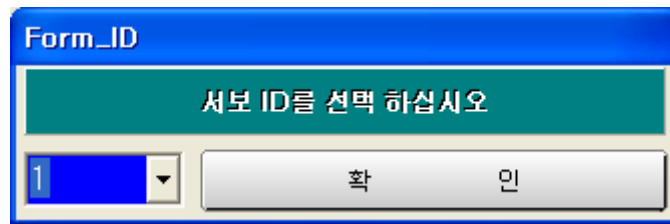
2.

Serial cable , SERVO DRIVE VIEW
 가 → Default COM1
 COM2(3) , Port Setting Comm Port
 2(3) 'OK'
 'OK'
 가

2.1.2

ID

가 , 3 ID



3. ID

Status

가 ID !
 ID

2.1.3

(P--)

'P1 ~ P9'

가

가

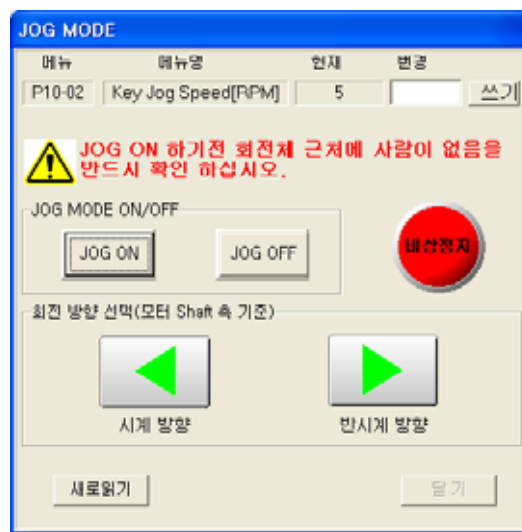
XDA-S

2.1.4 (P6--) :

4 가 (Jog Mode), (Auto Jog Mode),
(Auto Tuning Mode), (Manual Tuning Mode)가 .

2.1.4.1

, 'JOG ON'



4.

가 Stand-by 가 Jog Command

가

JOG , 'JOG OFF'

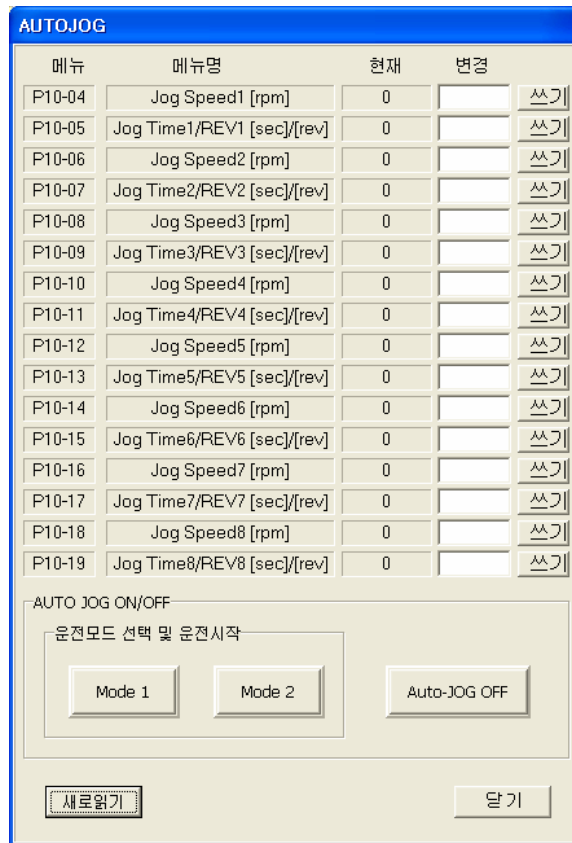
'JOG OFF' 'Close' , JOG

_____ 'JOG' 'JOG OFF'

JOG OFF

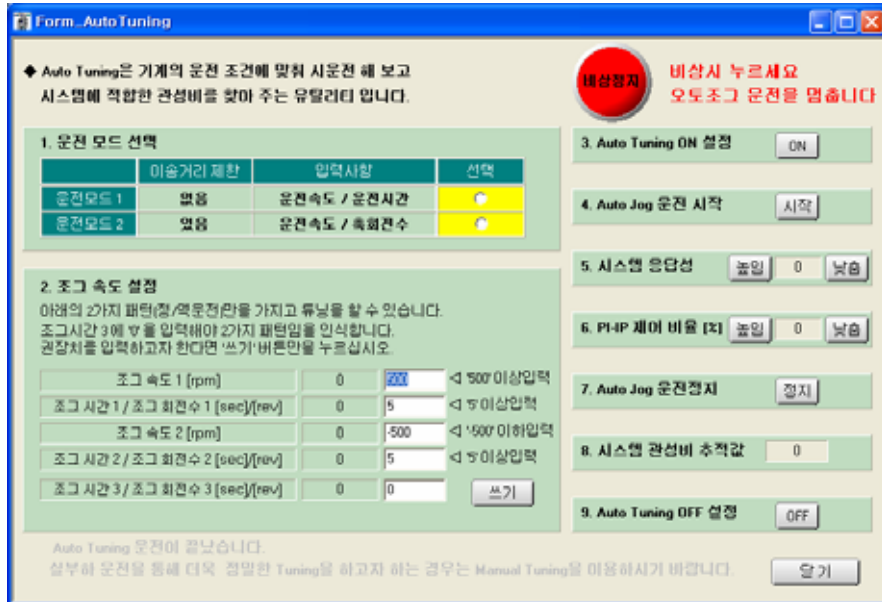
2.1.4.2

8 가
 'Mode1' 'Mode2' 8 가
 가 가 Auto JOG
 , 'Auto-JOG OFF' . Auto-JOG OFF 'Close'
 , Auto JOG Auto JOG
 'Auto-JOG OFF'



5.

2.1.4.3



6.

1, 2

Auto Jog

2.1.4.4



7.

2.1.5

SERVO DRIVE VIEW

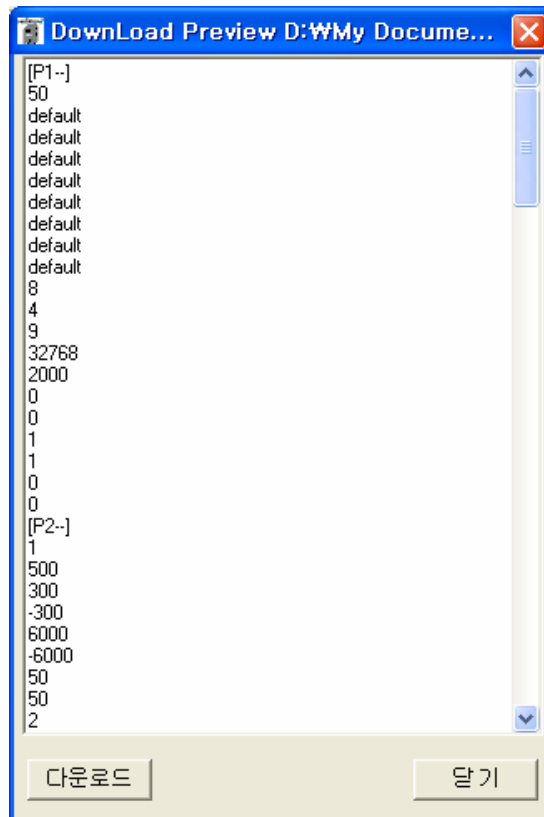
1) On-Line

2) ' ' → ' '*.lpa'

3)

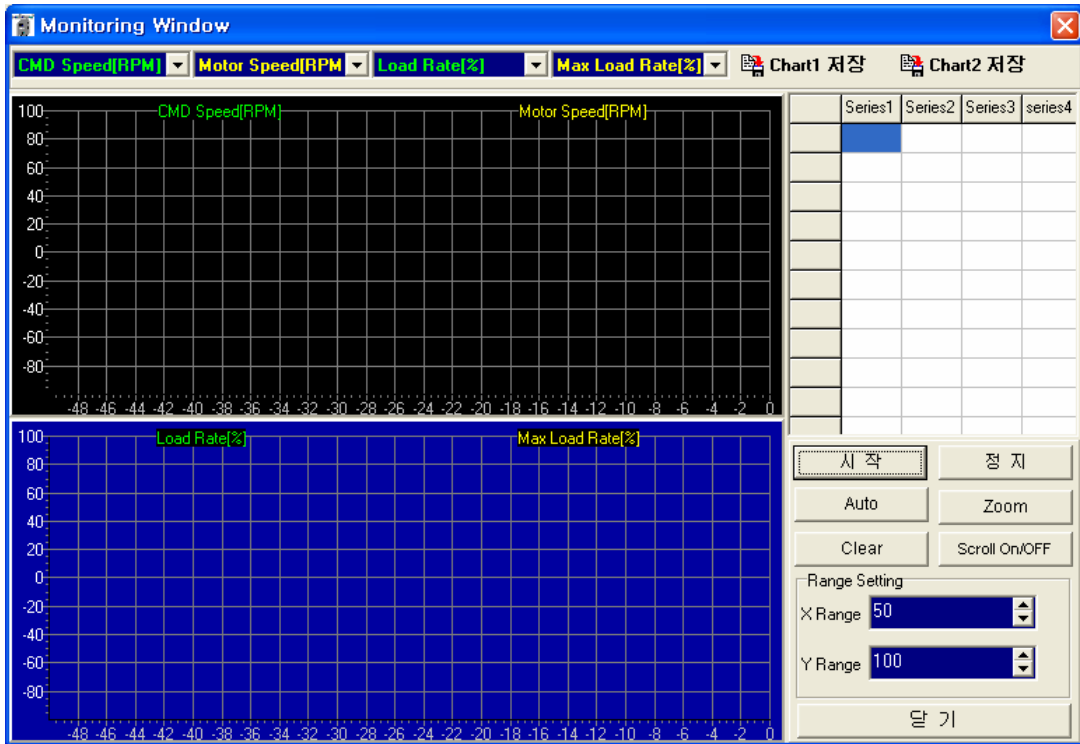
4) ' ' → ' lpa

5) ' ' ,



8.

2.1.6 (Monitor)



9.

- 1) . Sampling 9600[bps] 90
[ms] , (Sampling Rate)
- 2) ‘ ’
- 3) ‘Auto’ Y Range Range Setting
‘Zoom’ X-Y Range
- 4) ‘ ’ ‘Chart ’
bmp
- 5) ‘Clear’
- 6) ‘ ’

2.1.7 (Report)

*.vts'

REPORT										
읽기		초기화			저장			말기		
A	B	C	D	E	F	G	H	I	J	K
1	메뉴	메뉴명	저장값	메뉴	메뉴명	저장값	메뉴명	저장값	발출이벤트	
2	* P01-01	Motor ID		P04-01	Speed1	rpm			1	
3	P01-02	Inertia [g/cm ²]		P04-02	Speed2	rpm			2	
4	* P01-03	TRQ Constant [kg/cm/A]		P04-03	Speed3	rpm			3	
5	P01-04	Phase Inductance [mH]		P04-04	Speed4	rpm			4	
6	* P01-05	Phase Resistance [Ω]		P04-05	Speed5	rpm			5	
7	P01-06	Rated Current [A]		P04-06	Speed6	rpm			6	
8	* P01-07	Rated Speed [rpm]		P04-07	Speed7	rpm			7	
9	P01-08	MAX Speed [rpm]		P04-08	Torque1	%			8	
10	* P01-09	Rated TRQ [kg/cm]		P04-09	Torque2	%			9	
11	P01-10	Pole Number [pole]		P04-10	Torque3	%			10	
12	* P01-11	Drive ID		P04-11	Torque4	%				
13	* P01-12	Encoder ID		P04-12	Torque5	%				
14	* P01-13	Encoder Pulse [ppr]		P04-13	Torque6	%			정내경보	
15	* P01-14	Pulse Cut Rate [pulse]		P04-14	Torque7	%			외경보	
16	* P01-15	COM Baud Rate		* P05-01	POS Gain Mode				SPD1	
17	* P01-16	Senal Select		* P05-02	POS Pulse Type				SPD2	
18	* P01-17	Senal I/O		* P05-03	Speed Mode				SPD3	
19	* P01-18	Senal ID		* P05-04	Feedforward [%]				DR	
20	* P01-19	Parameter Lock		* P05-05	PC P Gain1 [Hz]				IWPI	
21	* P01-20	Senal Origin		* P05-06	PC P Gain2 [Hz]				CCWLM	
22	* R02-01	Control Mode		* P05-07	PLP Pulse ERR [pls]				CWLM	
23	* R02-02	Mode Change Time [ms]		* P05-08	IN Position [pls]				TLM	
24	* R02-03	CCW TRQ LMT [%]		* P05-09	Follow ERR [pls]				ESTOP	
25	* R02-04	CW TRQ LMT [%]		* P05-10	POS CMD TC [ms]				STOP	
26	* R02-05	CCW Speed Lmt [rpm]		* P05-11	FF TC[ms]				ALMR51	
27	* R02-06	CW Speed Lmt [rpm]		* P05-12	ELCTR Gear NUM1				동작	
28	* R02-07	Brake Speed [rpm]		* P05-13	ELCTR Gear DEN1				BRK	
29	* R02-08	Brake Time [ms]		* P05-14	ELCTR Gear NUM2				INSPD	
30	* R02-09	DB Mode		* P05-15	ELCTR Gear DEN2				ZSPD	
31	* R02-10	Notch Filter1		* P05-16	ELCTR Gear NUM3				RDY	
32	* R02-11	NF Frequency1 [Hz]		* P05-17	ELCTR Gear DEN3				TRGOUT	
33	* R02-12	NF Bandwidth1 [%]		* P05-18	ELCTR Gear NUM4				ALARM	
34	* R02-13	Notch Filter2		* P05-19	ELCTR Gear DEN4				A CODE0	
35	* R02-14	NF Frequency2 [Hz]		* P05-20	Bas SPD COMPEN [rpm]				A CODE1	
36	* R02-15	NF Bandwidth2 [%]		* P05-21	Bas Pulse Band [pls]				A CODE2	
37	* R02-16	TRQ Filter TC [ms]		* P05-22	Sacklash Pulse [pls]				A CODE3	
38	* R02-17	Auto Tuning		* P06-01	Analog TRQ TC [ms]					
39	* R02-18	System Response		* P06-02	TRQ ACCEL Time [ms]					
40	* R02-19	Inertia Ratio		* P06-03	TRQ DECEL Time [ms]					
41	* P02-20	Gain ADJ Speed1 [rpm]		* P06-04	TRQ S-Mode [ms]					
42	* P02-21	Gain ADJ Speed2 [rpm]		* P06-05	In TRQ Range [%]					

10.

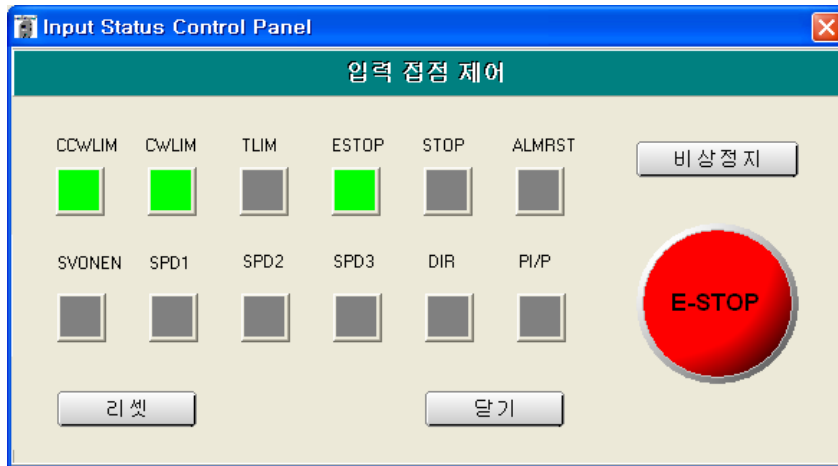
- 1) ‘ ’
- 2) ‘ ’
- 3) ‘ ’
- 4) ‘ ’

Excel

*.vts' 가

2.1.8 Input

→
Serial I/O (P1-17) '1'

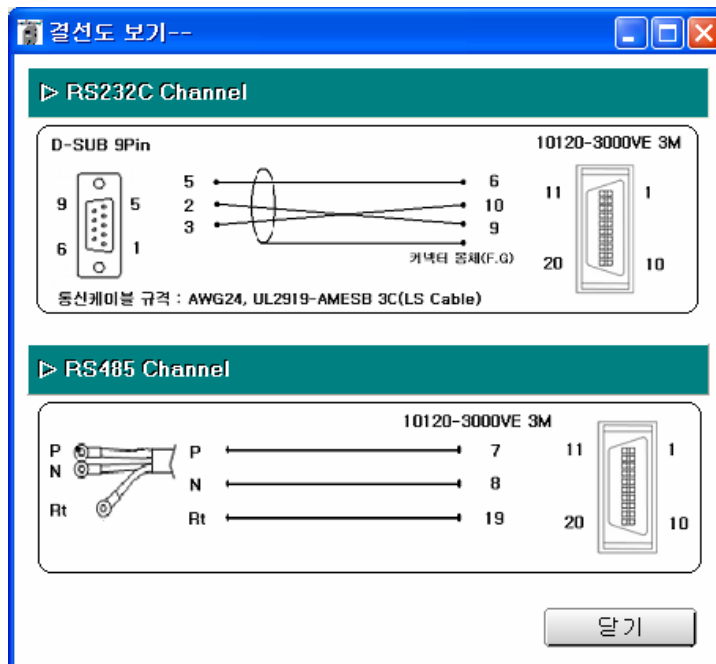


11.

· 'E-STOP' IO

2.1.9

→



3

12.

3.

3.1

1. 가 .
2. SERVO DRIVE VIEW Serial cable .
3. .
4. **USB** .
 - 1) USB (WIN2000, XP SERVO DRIVE VIEW)
 - a) **UC-232A (ATEN, Made in Taiwan) :**
 - b) U232-P9 (Made in Taiwan) : 가.

3.2

1. 가 .
2. 가 ,
가 .

3.3

1. 가 .
가 .
2. Reset ,
가 .

3.4 (Report)

Error

1. Window SERVO DRIVE VIEW SERVO DRIVE VIEW
Error 가 가 . Window 가 Report

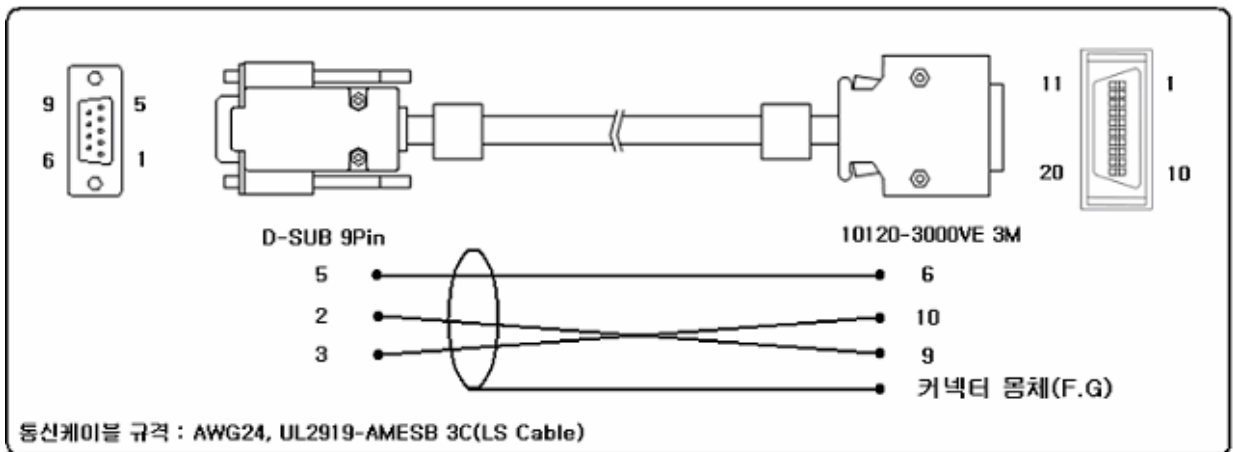
OCX

'REPORT_OCX.Bat'

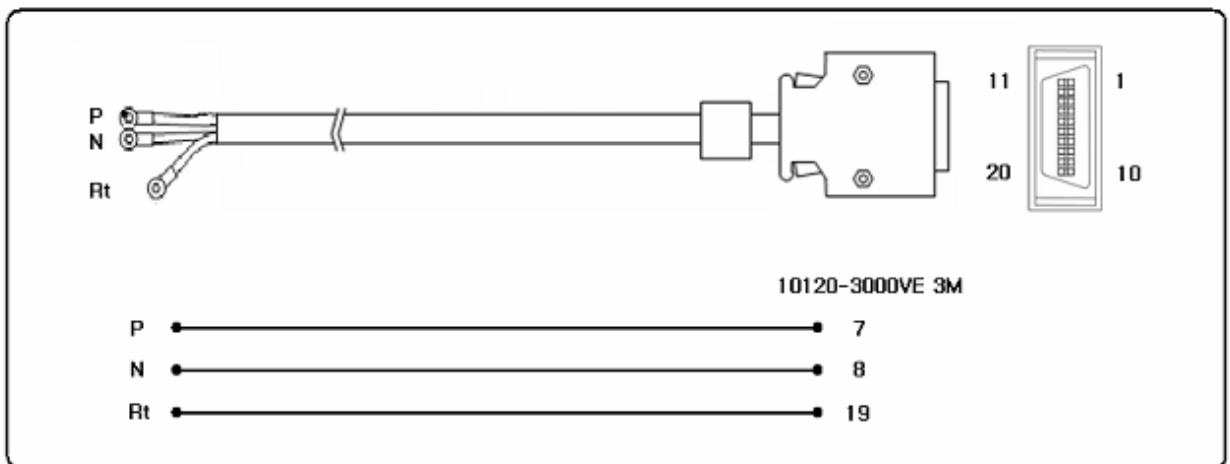
4

4.

4.1 RS232C



4.2 RS485



RS232C

. D-SUB 9pin

Shield Cable

)

10120-3000VE

. (

[]

[1]

Version		
Version 1.0		
